

公司简介 / COMPANY PROFILE

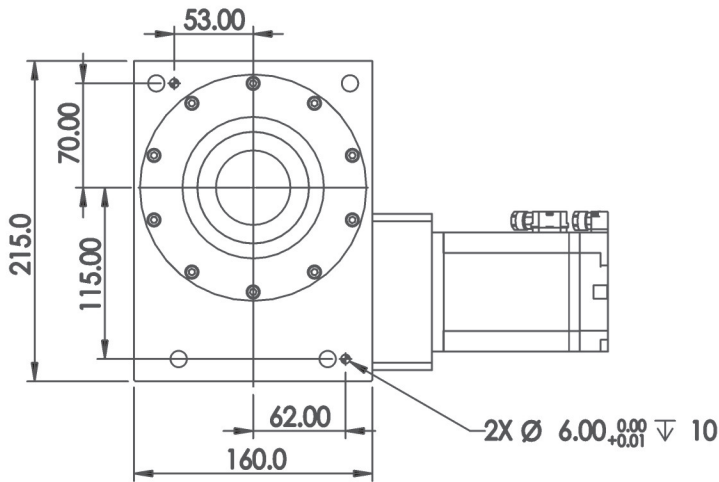
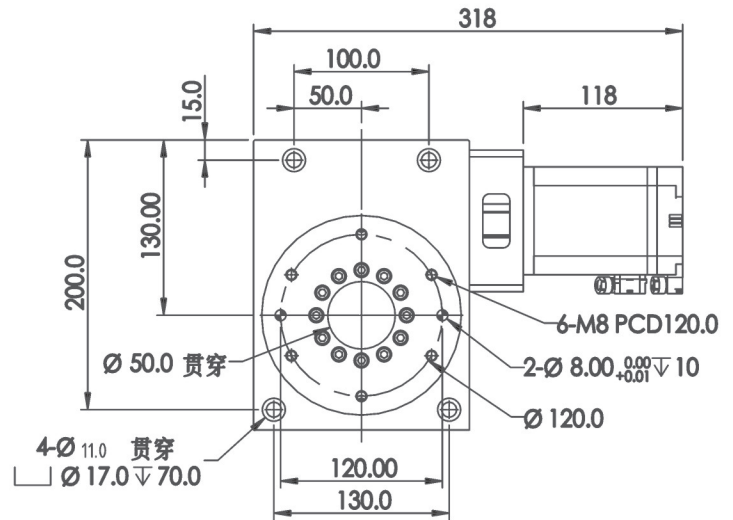
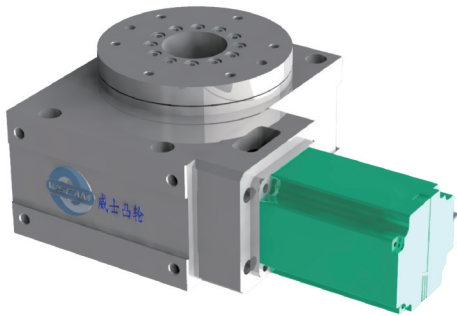
威士凸轮机械科技(苏州)有限公司,是一家专业精密凸轮传动产品研发生产和销售的企业,其主要产品有伺服凸轮旋转中空平台,重载凸轮式转台,任意分度伺服转台,其产品具有高精度,高负载等特性,公司提供转台配套定制以及工业控制环境下各种凸轮分度解决方案. 其产品广泛应用于自动化组装,半导体设备,汽车焊接,新能源,芯片制造,变位机,包装机械,陶瓷机械,具有定位精准,可承受超重负载,等特性.

Weis CAM Machinery Technology (Suzhou) Co., LTD., is a professional precision CAM transmission products R & D, production and sales of enterprises, its main products are servo CAM rotary hollow platform, heavy duty CAM turntable, arbitrary indexing servo turntable, its products have high precision, high load and other characteristics. The company provides customized turntable and various CAM indexing solutions under industrial control environment. Its products are widely used in automated assembly, semiconductor equipment, automotive welding, new energy, chip manufacturing, positioner, packaging machinery, ceramic machinery, with accurate positioning, can withstand overweight load, and other characteristics.

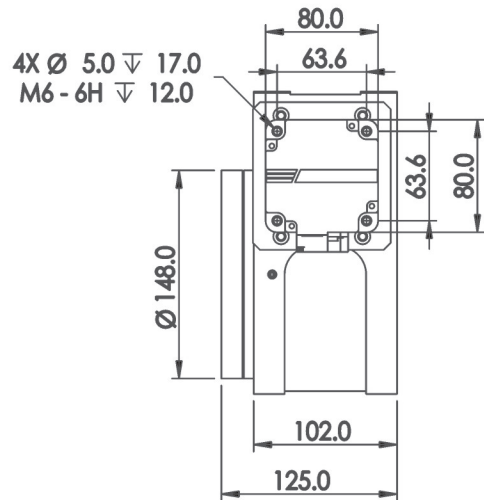


《《 伺服凸轮转台 SERVO CAM INDEXING

WS-70CR



底部视图



性能/PERFORMANCE

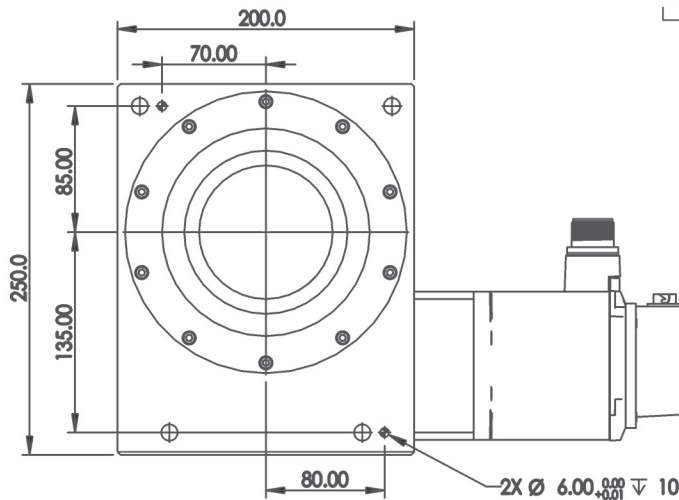
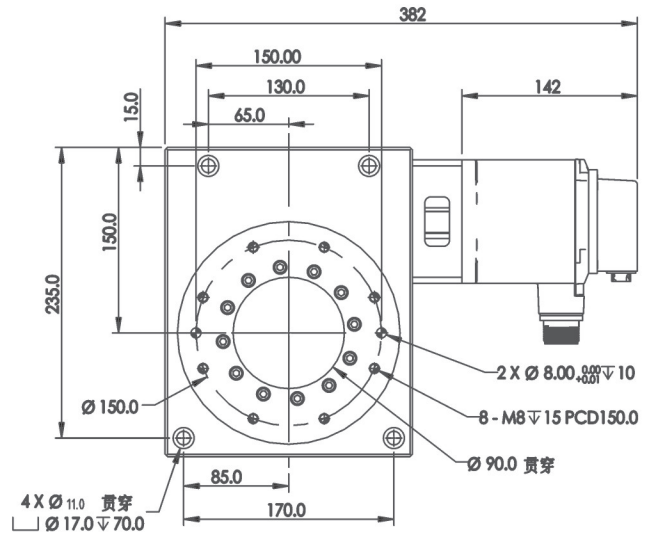
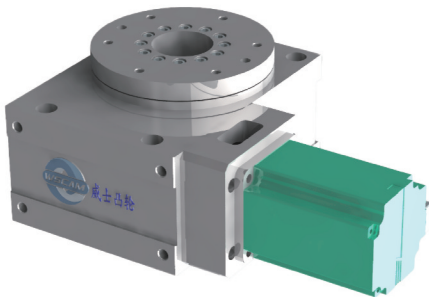
减速比 reduction gear ratio	1:20
轴承bearing	交叉滚子轴承
工作盘直径Working disk diameter	148MM
中心孔直径Center hole diameter	50MM
伺服马达servo motor	≥0.4KW
容许径向负荷Allow radial load	350kgf-m
容许轴向负荷Allow axial load	180kgf-m
容许力矩Allow torque	20kgf-m

转动面平行度Parallel degree of rotation surface	≤0.008mm
平面跳动Plane runout	≤0.008mm
同心度Concentricity	≤0.01mm
最高转速Maximum speed	1000rpm
定位精度Positioning accuracy	20sec
重复定位精度Repeated positioning accuracy	5sec
重量weight	21KG

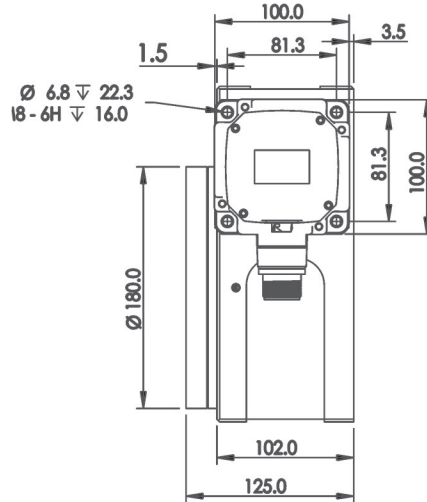


伺服凸轮转台 SERVO CAM INDEXING

WS-90CR



底部视图



性能/PERFORMANCE

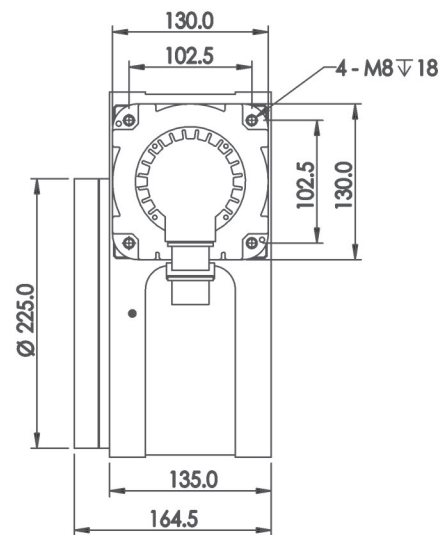
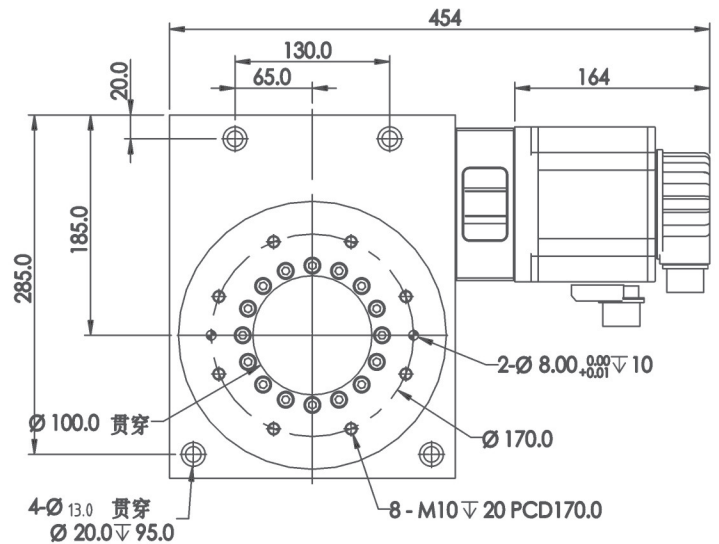
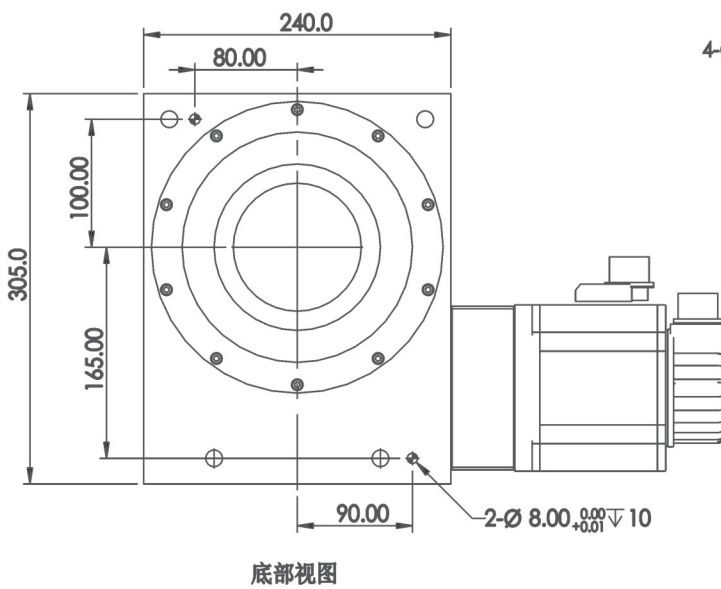
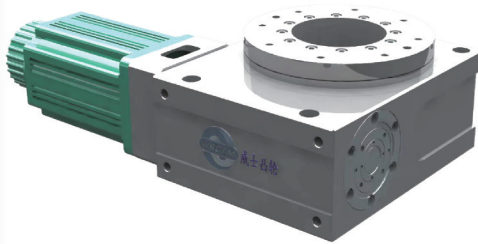
减速比 reduction gear ratio	1:20
轴承 bearing	交叉滚子轴承
工作盘直径 Working disk diameter	180mm
中心孔直径 Center hole diameter	90mm
伺服马达 servo motor	≥ 0.75 KW
容许径向负荷 Allow radial load	600kgf-m
容许轴向负荷 Allow axial load	290kgf-m
容许力矩 Allow torque	40kgf-m

转动面平行度 Parallel degree of rotation surface	≤ 0.01 mm
平面跳动 Plane runout	≤ 0.01 mm
同心度 Concentricity	≤ 0.01 mm
最高转速 Maximum speed	1000rpm
定位精度 Positioning accuracy	20sec
重复定位精度 Repeated positioning accuracy	5sec
重量 weight	32KG



《《 伺服凸轮转台 SERVO CAM INDEXING

WS-110CR



性能/PERFORMANCE

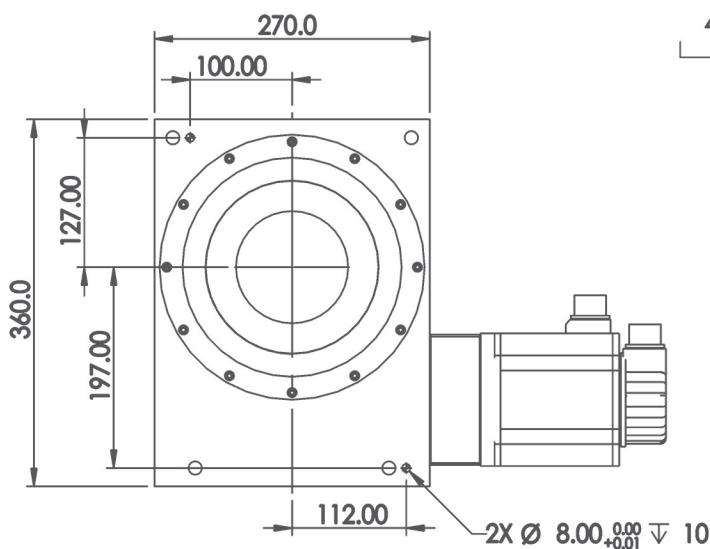
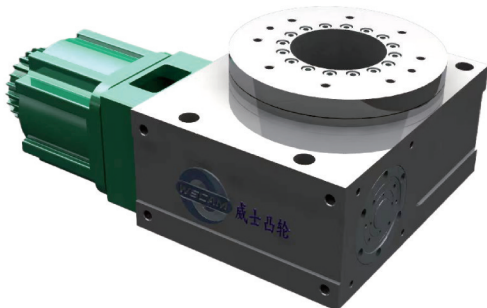
减速比 reduction gear ratio	1:20
轴承 bearing	交叉滚子轴承
工作盘直径 Working disk diameter	225mm
中心孔直径 Center hole diameter	100mm
伺服马达 servo motor	≥ 1.5 KW
容许径向负荷 Allow radial load	950kgf-m
容许轴向负荷 Allow axial load	420kgf-m
容许力矩 Allow torque	100kgf-m

转动面平行度 Parallel degree of rotation surface	≤ 0.01 mm
平面跳动 Plane runout	≤ 0.01 mm
同心度 Concentricity	≤ 0.01 mm
最高转速 Maximum speed	1000rpm
定位精度 Positioning accuracy	20sec
重复定位精度 Repeated positioning accuracy	5sec
重量 weight	65KG

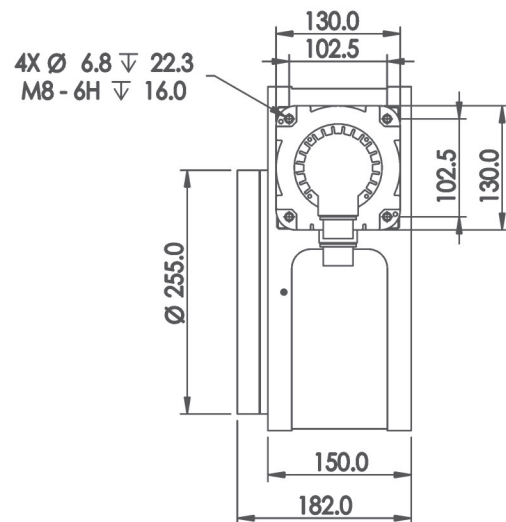
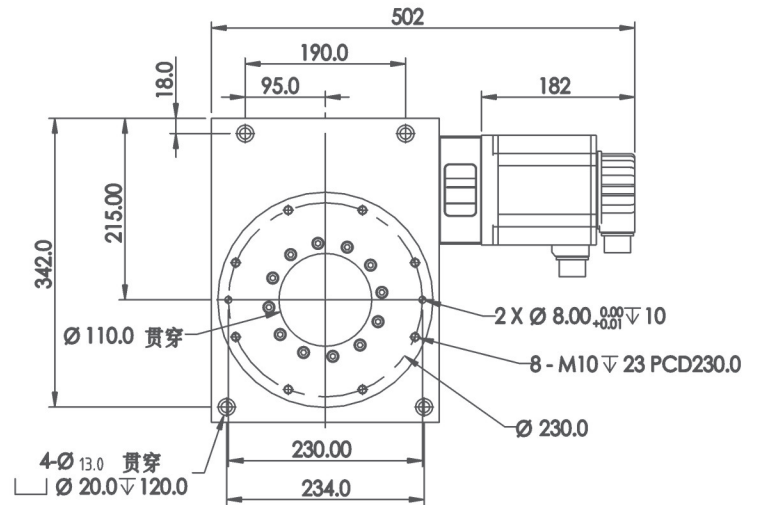


《《 伺服凸轮转台 SERVO CAM INDEXING

WS-130CR



底部视图



性能/PERFORMANCE

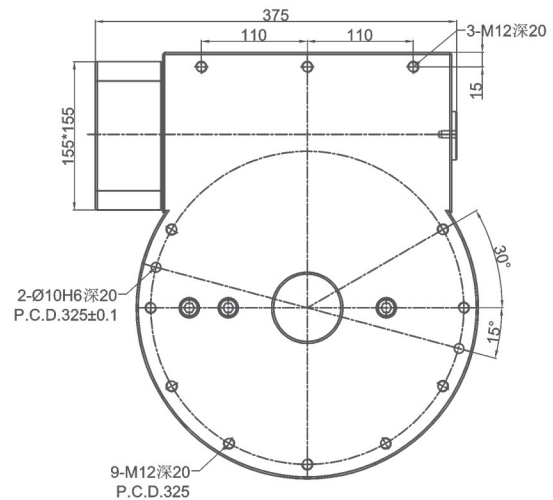
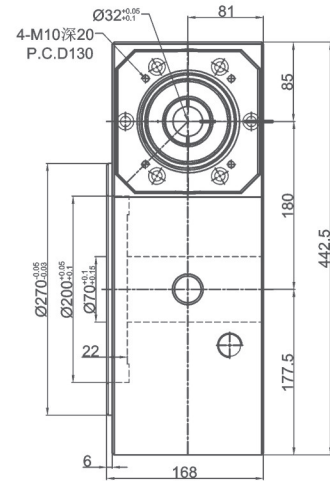
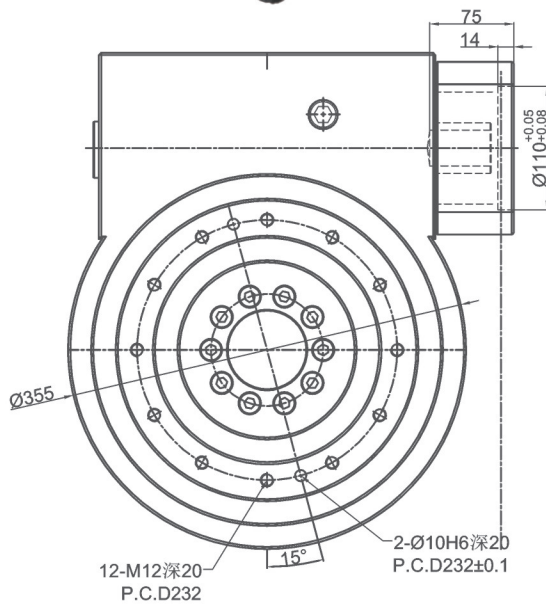
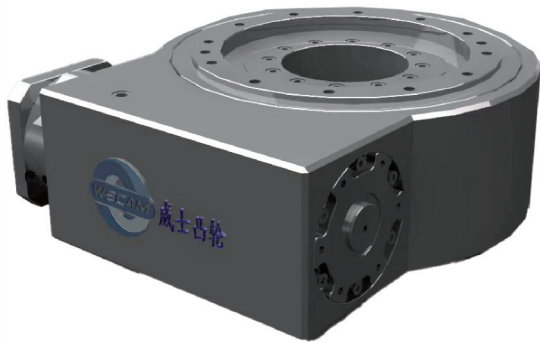
减速比 reduction gear ratio	1:20
轴承bearing	交叉滚子轴承
工作盘直径Working disk diameter	225mm
中心孔直径Center hole diameter	110mm
伺服马达servo motor	≥1.5KW
容许径向负荷Allow radial load	1300kgf-m
容许轴向负荷Allow axial load	680kgf-m
容许力矩Allow torque	120kgf-m

转动面平行度Parallel degree of rotation surface	≤0.01mm
平面跳动Plane runout	≤0.01mm
同心度Concentricity	≤0.01mm
最高转速Maximum speed	1000rpm
定位精度Positioning accuracy	20sec
重复定位精度Repeated positioning accuracy	5sec
重量weight	86kg



《《 伺服凸轮转台 SERVO CAM INDEXING

WS-180CR



性能/PERFORMANCE

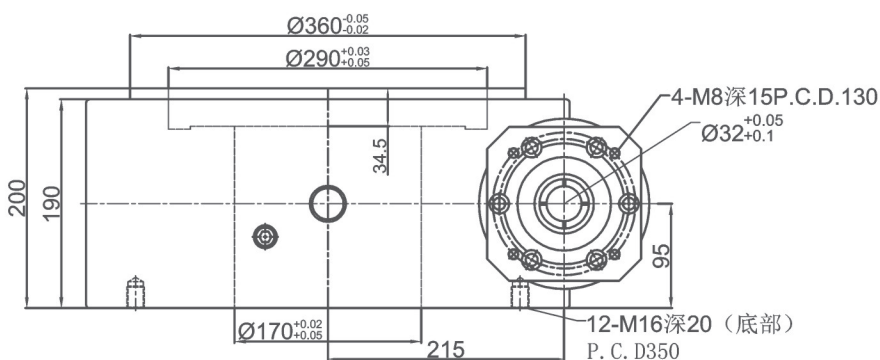
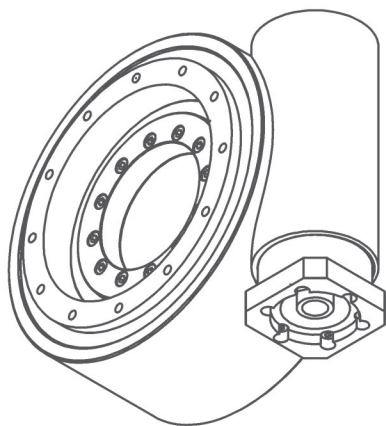
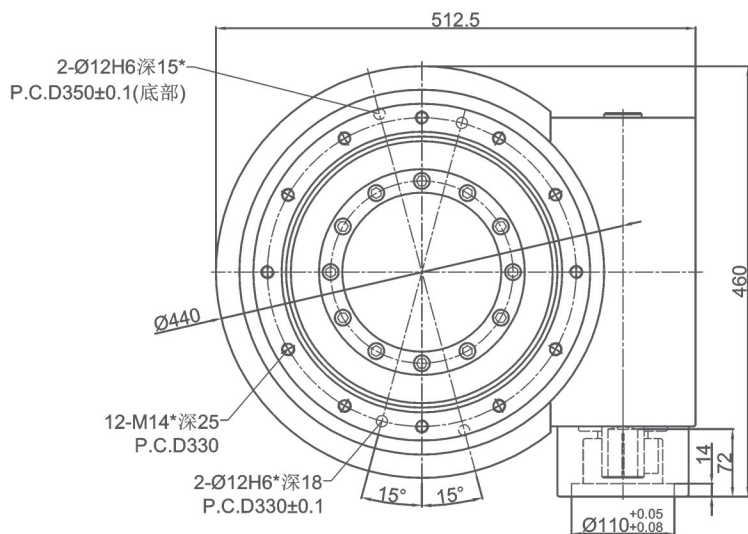
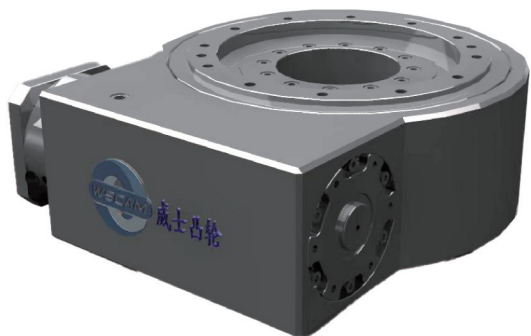
减速比 reduction gear ratio	1:24
轴承bearing	交叉滚子轴承
工作盘直径Working disk diameter	270mm
中心孔直径Center hole diameter	70mm
伺服马达servo motor	≥2KW
容许径向负荷Allow radial load	1980kgf-m
容许轴向负荷Allow axial load	960kgf-m
容许力矩Allow torque	196kgf-m

转动面平行度Parallel degree of rotation surface	≤0.01mm
平面跳动Plane runout	≤0.01mm
同心度Concentricity	≤0.01mm
最高转速Maximum speed	1000rpm
定位精度Positioning accuracy	30sec
重复定位精度Repeated positioning accuracy	10sec
重量weight	120kg



《《 伺服凸轮转台 SERVO CAM INDEXING

WS-215CR



性能/PERFORMANCE

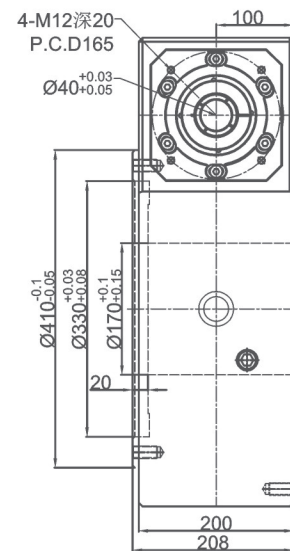
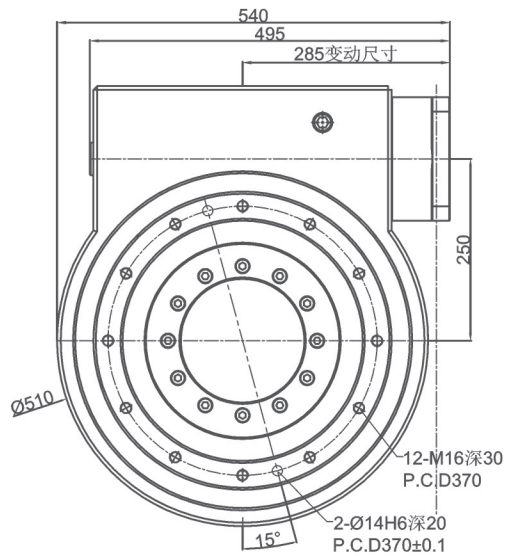
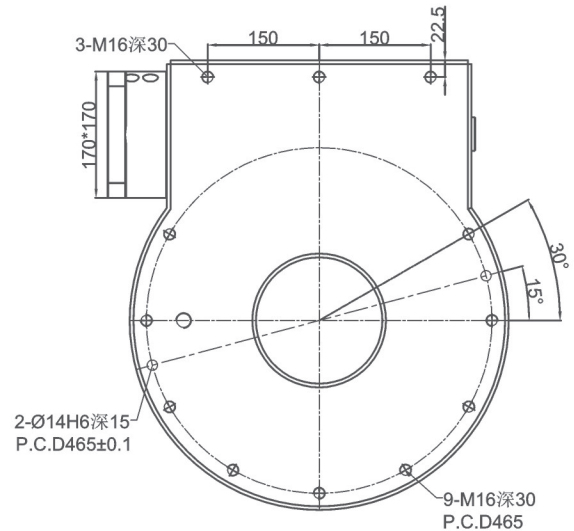
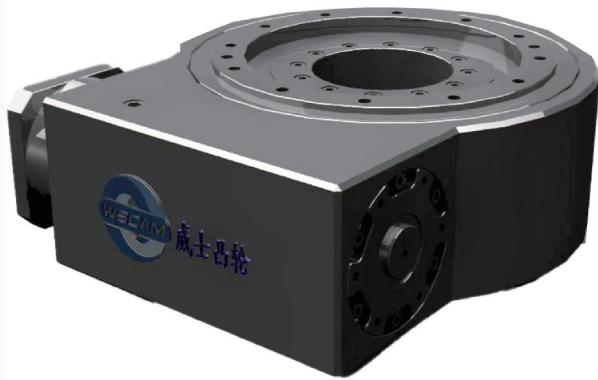
减速比 reduction gear ratio	1:30
轴承 bearing	交叉滚子轴承
工作盘直径 Working disk diameter	360mm
中心孔直径 Center hole diameter	170mm
伺服马达 servo motor	≥3KW
容许径向负荷 Allow radial load	2000kgf-m
容许轴向负荷 Allow axial load	1200kgf-m
容许力矩 Allow torque	270kgf-m

转动面平行度 Parallel degree of rotation surface	≤0.02mm
平面跳动 Plane runout	≤0.02mm
同心度 Concentricity	≤0.02mm
最高转速 Maximum speed	1000rpm
定位精度 Positioning accuracy	30sec
重复定位精度 Repeated positioning accuracy	10sec
重量 weight	135kg



《《 伺服凸轮转台 SERVO CAM INDEXING

WS-250CR



性能/PERFORMANCE

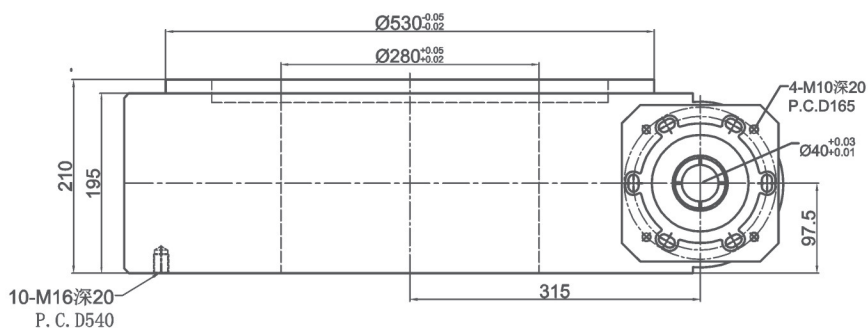
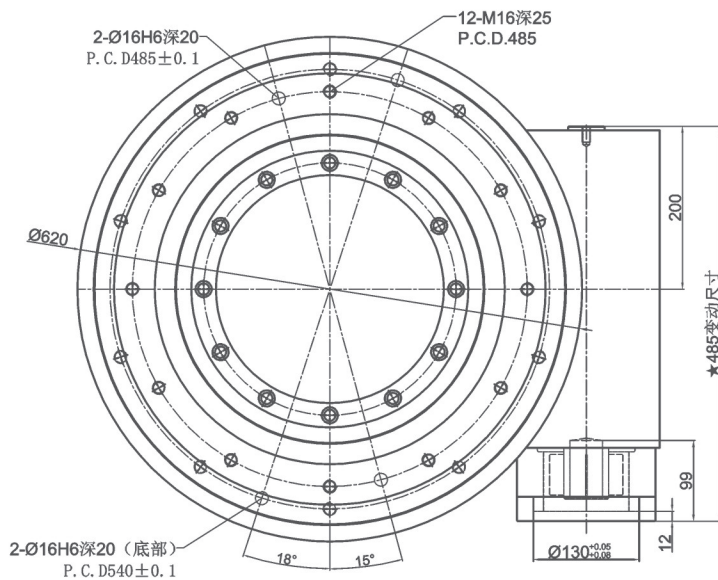
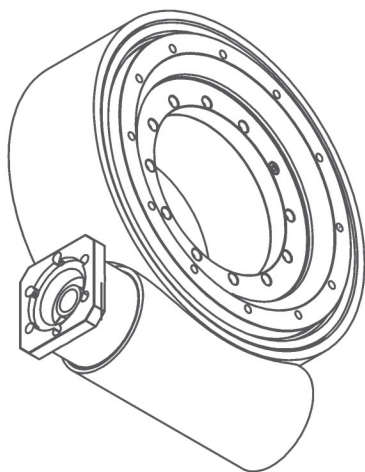
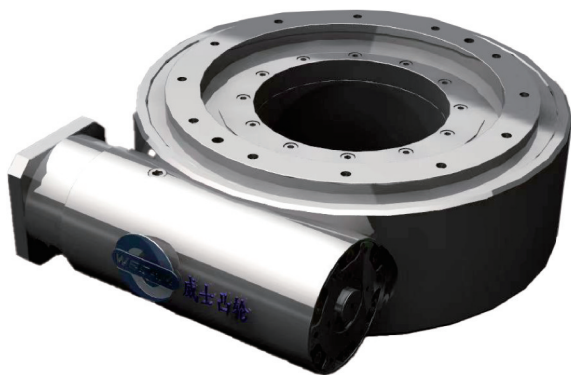
减速比 reduction gear ratio	1:30
轴承bearing	交叉滚子轴承
工作盘直径Working disk diameter	410mm
中心孔直径Center hole diameter	170mm
伺服马达servo motor	≥3KW
容许径向负荷Allow radial load	2600kgf-m
容许轴向负荷Allow axial load	1900kgf-m
容许力矩Allow torque	310kgf-m

转动面平行度Parallel degree of rotation surface	≤0.03mm
平面跳动Plane runout	≤0.03mm
同心度Concentricity	≤0.03mm
最高转速Maximum speed	800rpm
定位精度Positioning accuracy	30sec
重复定位精度Repeated positioning accuracy	10sec
重量weight	190KG



《《 伺服凸轮转台 SERVO CAM INDEXING

WS-315CR



性能/PERFORMANCE

减速比 reduction gear ratio	1:40
轴承 bearing	交叉滚子轴承
工作盘直径 Working disk diameter	530mm
中心孔直径 Center hole diameter	280mm
伺服马达 servo motor	$\geq 3KW$
容许径向负荷 Allow radial load	3200kgf-m
容许轴向负荷 Allow axial load	2800kgf-m
容许力矩 Allow torque	520kgf-m

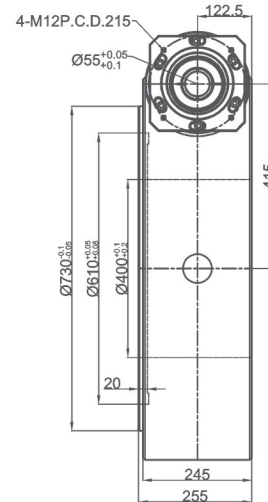
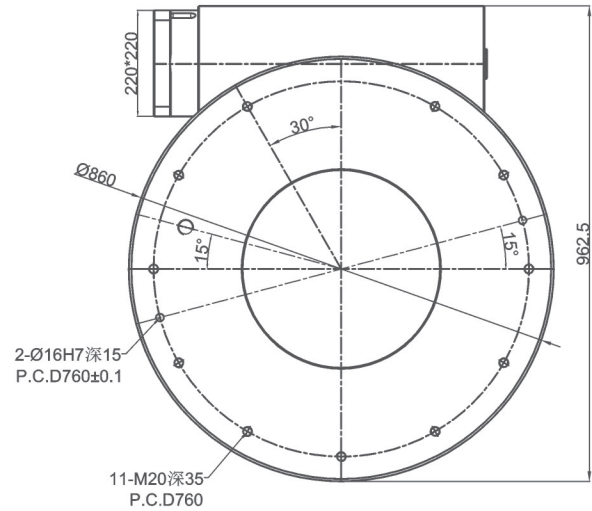
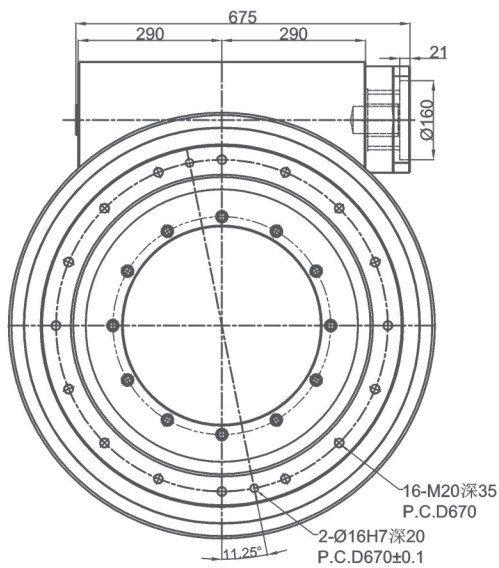
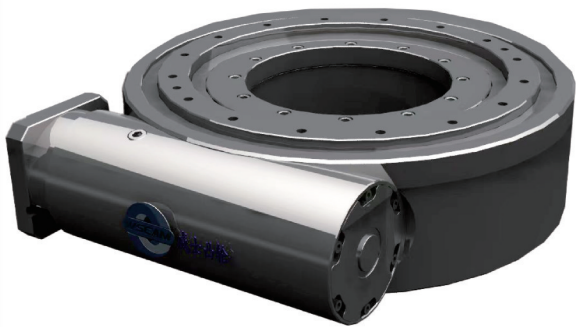
转动面平行度 Parallel degree of rotation surface	$\leq 0.03mm$
平面跳动 Plane runout	$\leq 0.03mm$
同心度 Concentricity	$\leq 0.03mm$
最高转速 Maximum speed	800rpm
定位精度 Positioning accuracy	30sec
重复定位精度 Repeated positioning accuracy	10sec
重量 weight	245kg



伺服凸轮转台

SERVO CAM INDEXING

WS-415CR



性能/PERFORMANCE

减速比 reduction gear ratio	1:30
轴承bearing	交叉滚子轴承
工作盘直径Working disk diameter	730mm
中心孔直径Center hole diameter	400mm
伺服马达servo motor	≥3KW
容许径向负荷Allow radial load	5000kgf-m
容许轴向负荷Allow axial load	4500kgf-m
容许力矩Allow torque	1200kgf-m

转动面平行度Parallel degree of rotation surface	≤0.04mm
平面跳动Plane runout	≤0.04mm
同心度Concentricity	≤0.04mm
最高转速Maximum speed	800rpm
定位精度Positioning accuracy	30sec
重复定位精度Repeated positioning accuracy	10sec
重量weight	280kg